

## UNI-4415

UNI4415 tag is a flexible label that can be stuck on metallic assets, especially for irregular and uneven surfaces; it has good performance on the metal surface and can be printed and encoded by a Industrial printer.

They offer an extended reading range, making them competent for disparate application areas.



## Applications



Asset Management



Retail Management



Warehouse Management

## Ordering Information:

Part Number	IC Type	Memory Configuration	Face Material
<b>RFMO-240209-ETSI/FCC</b>	Impinj Monza M730	EPC Memory - 128 bits	Polyester
<b>RFLMO-240509-ETSI/FCC</b>	NXP UCODE8	EPC Memory - 128 bits	Polyester

# For other versions, additional information, and technical support, contact Perfect ID..

## Electrical Specifications

<b>Operational Frequency</b>	FCC: 902-928MHz ETSI: 865- 868 MHz
<b>Interface Protocol</b>	ISO 18000-63 and EPCglobal Gen2v2
<b>Chip Type*</b>	Impinj Monza M730
<b>Memory Configuration</b>	EPC Memory - 128 bits
<b>Data Retention</b>	50 Years
<b>Write Cycle Endurance</b>	100,000 cycles
<b>Read Range**</b>	upto 3.5 Meter

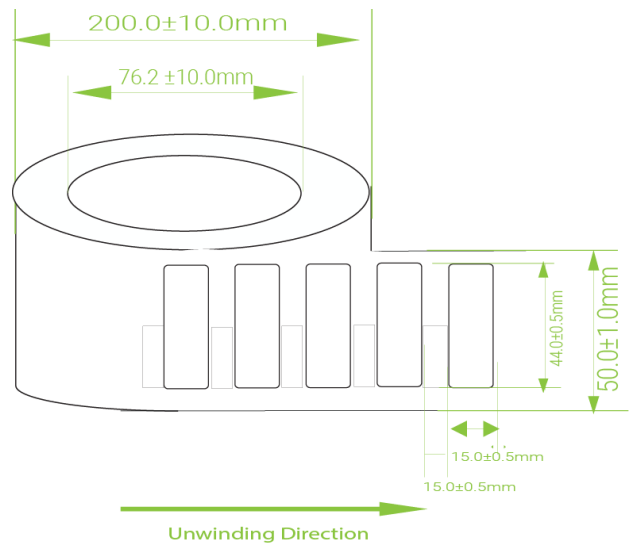
## Product characteristics

<b>Die Cut Size</b>	44.0 X 15.0 X 1.0 mm / 1.73 X 0.59 X 0.03 in
<b>Yield</b>	100 %
<b>Face Material</b>	Synthetic Polyester
<b>Packaging</b>	Reel core inner dimension: 76.2mm/3" , 500pcs/roll
<b>Attachment</b>	Adhesive

## Environmental Specifications

<b>Operating Temperature</b>	-40 to +85 °C
<b>Storage Temperature</b>	-40 to +85 °C
<b>IP Rating</b>	IP 68 , test for 5 hr at 1m deep water

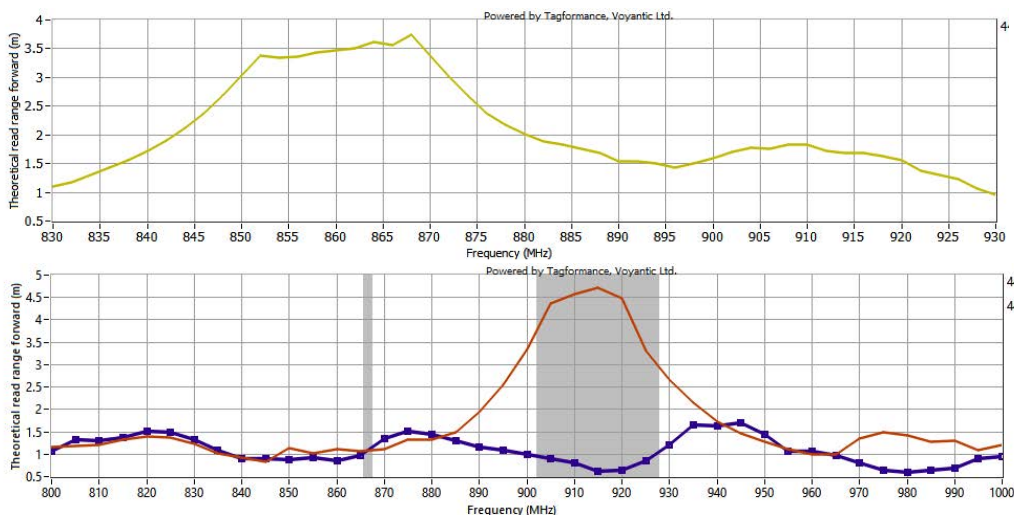
## Product Drawing



## Personalization

- Customer specific encoding of EPC .
- Customised printing of logo, text, barcode ,etc.

## READ RANGE GRAPH



\*\* The indicated read range values were measured in our laboratory testing environment, where antennas with optimum directivity had been used with a maximum allowed operating power. Different surface materials and environments may exhibit different results.